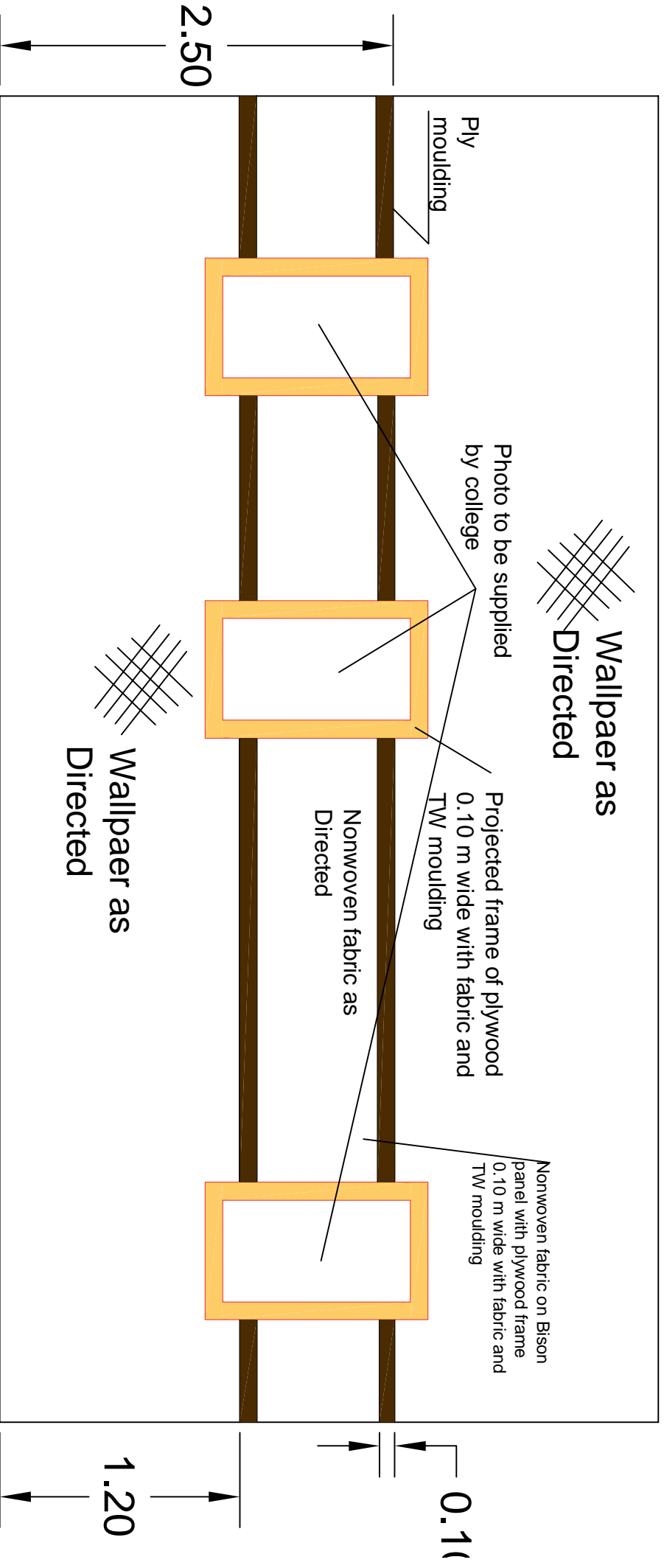
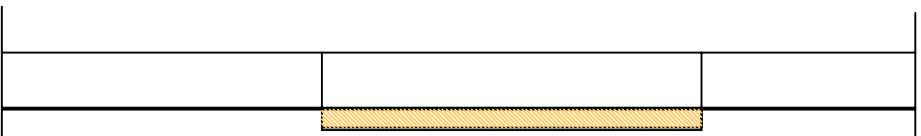


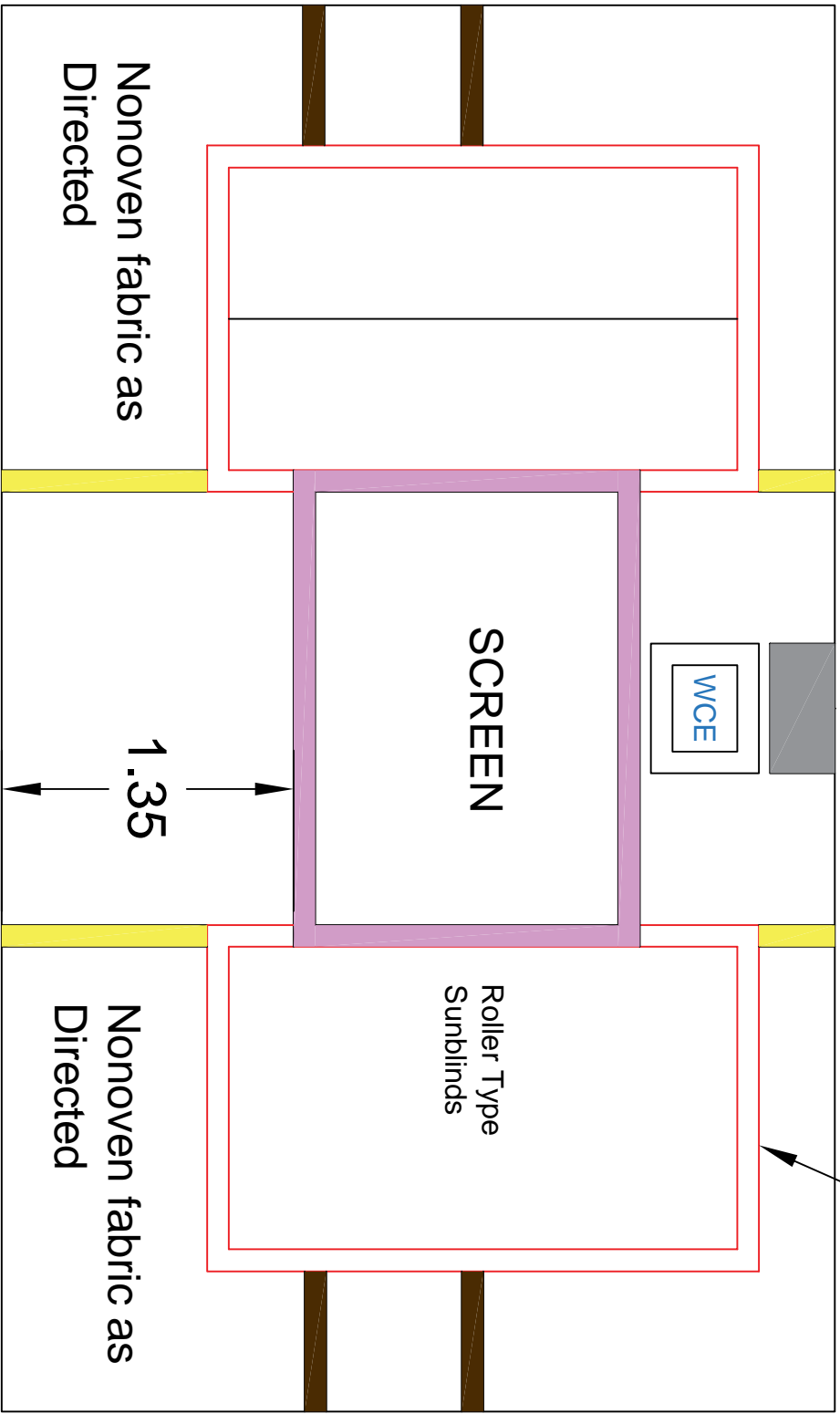
# Details of furniture at Waiting room



EAST SIDE



**SECTION  
NORTH SIDE**



0.10 MM Wide Fabric Fixed Over  
Ply Frame with TW moulding as  
Directed

**NORTH SIDE**

Nonoven fabric as  
Directed

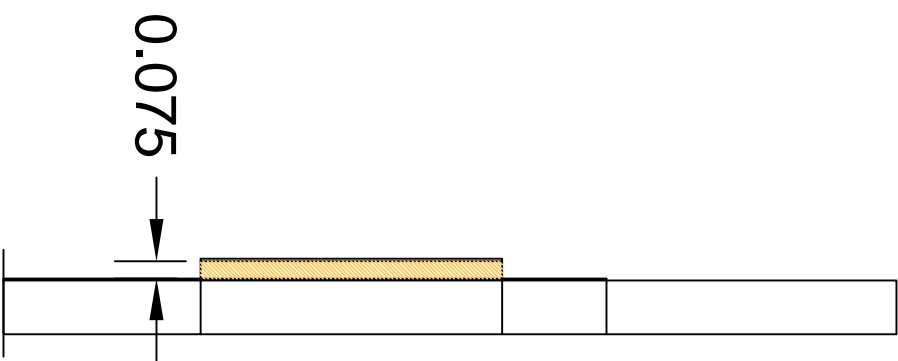
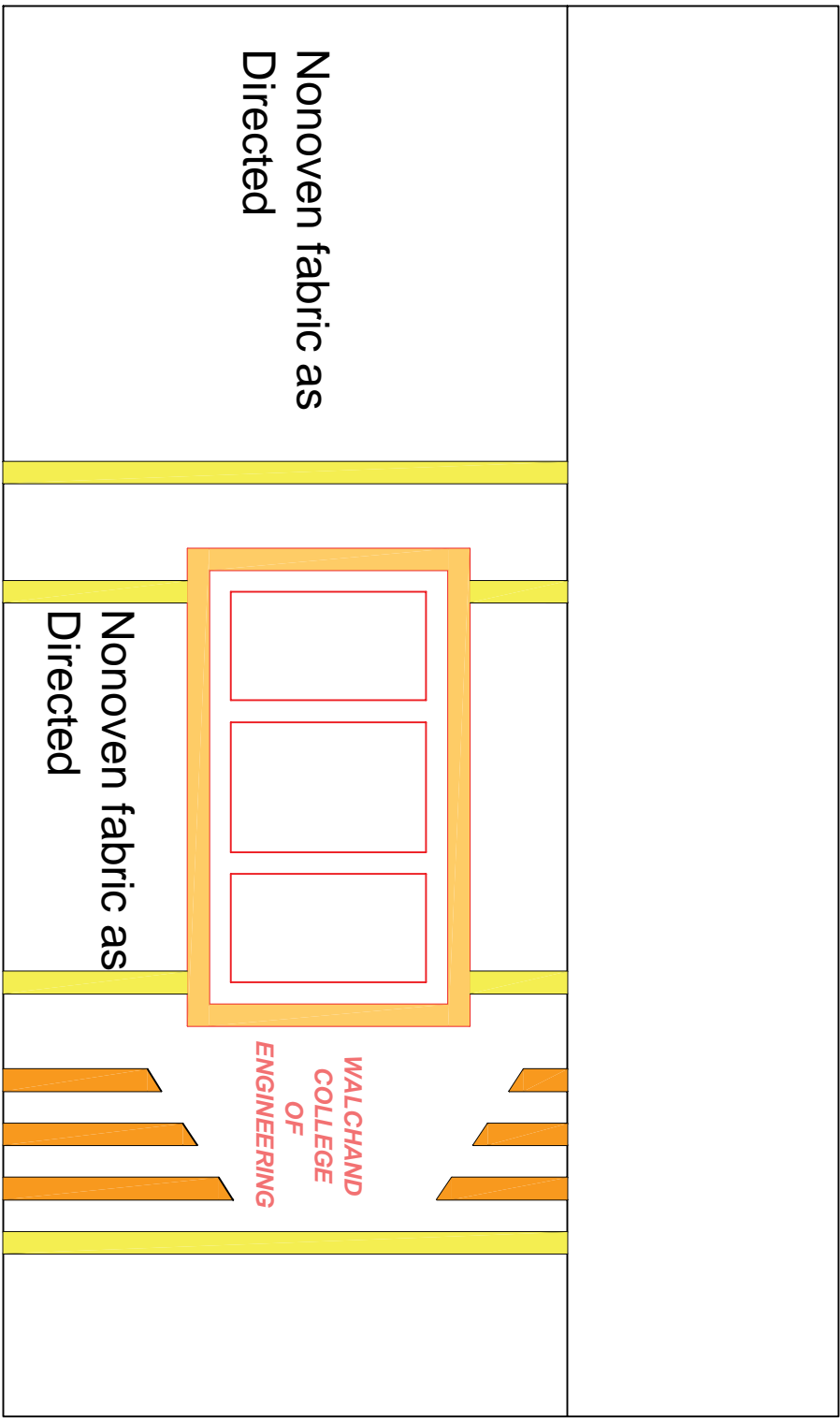
**SCREEN**

WCE

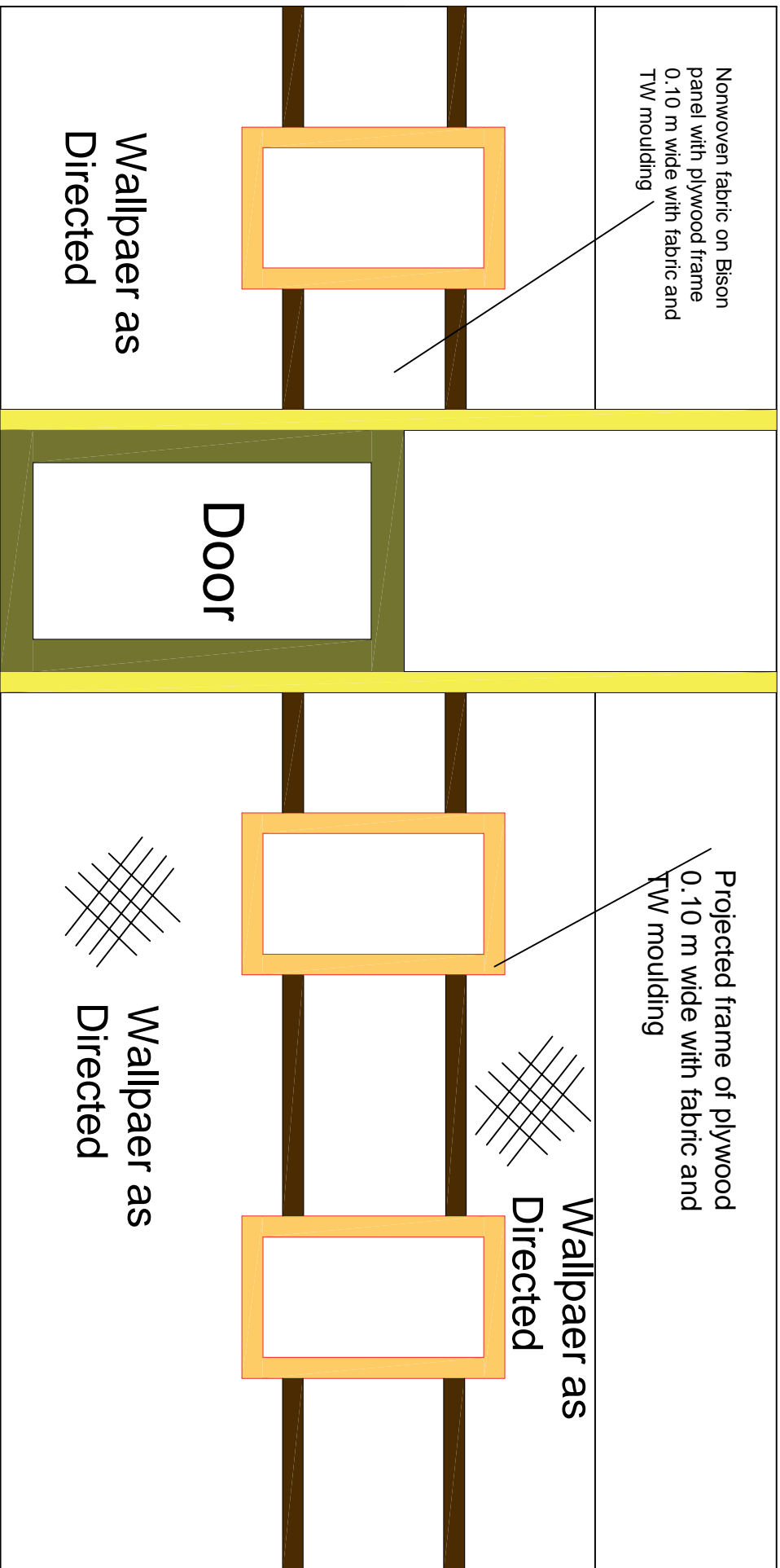
1.35

Roller Type  
Sunblinds

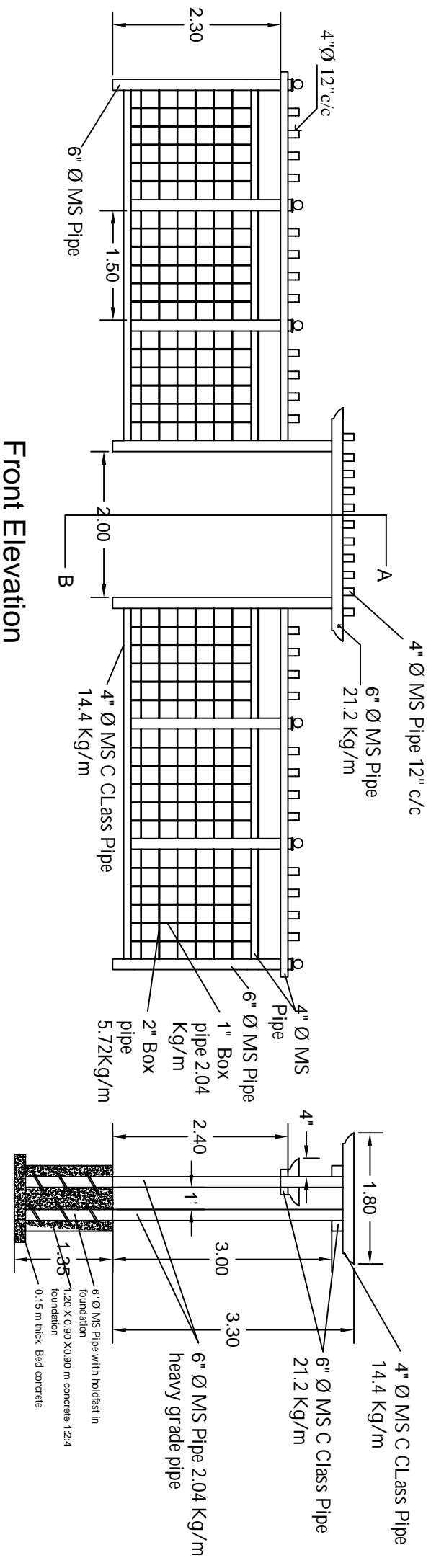
Nonoven fabric as  
Directed



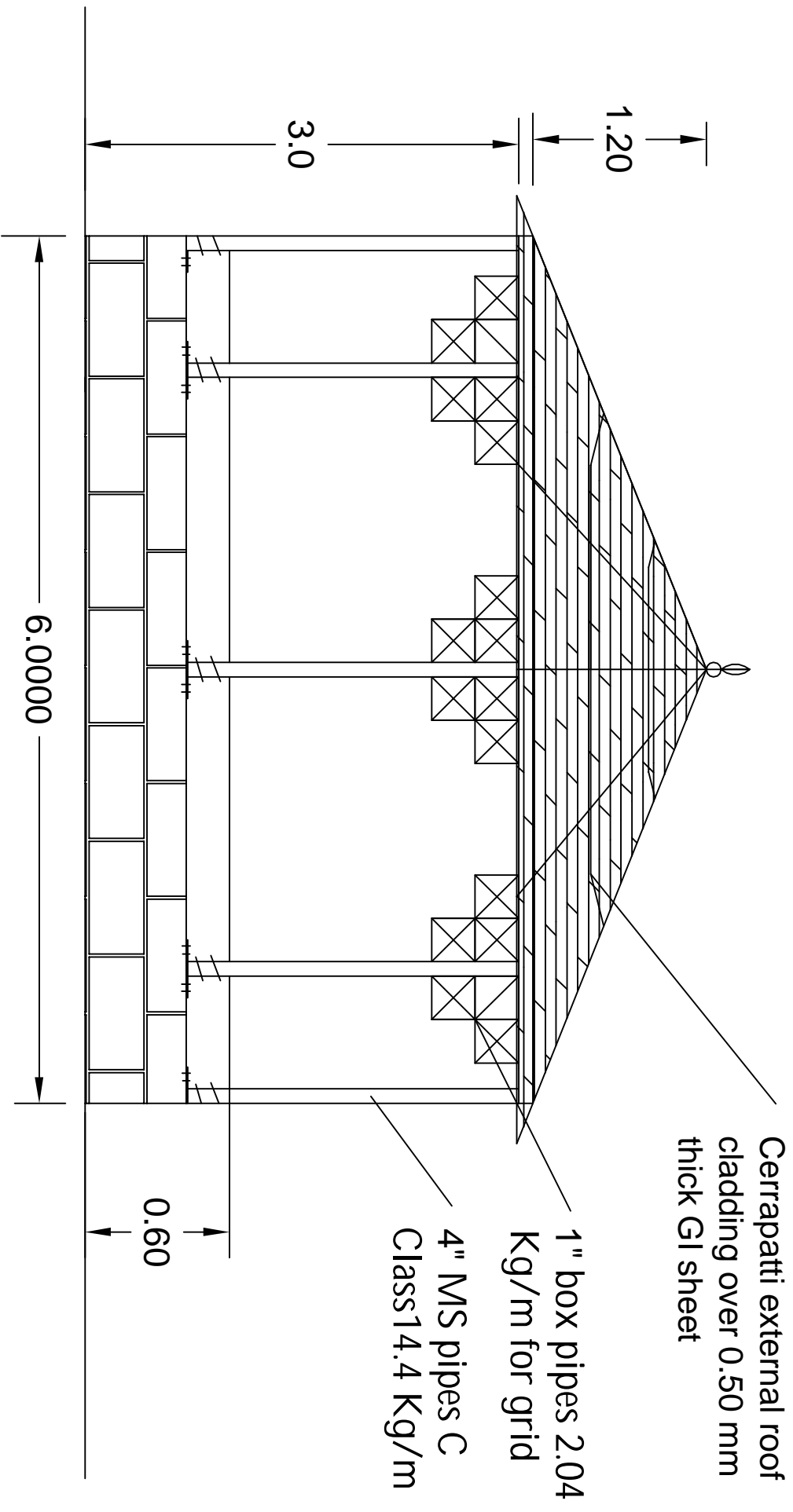
SECTION



**WEST SIDE**

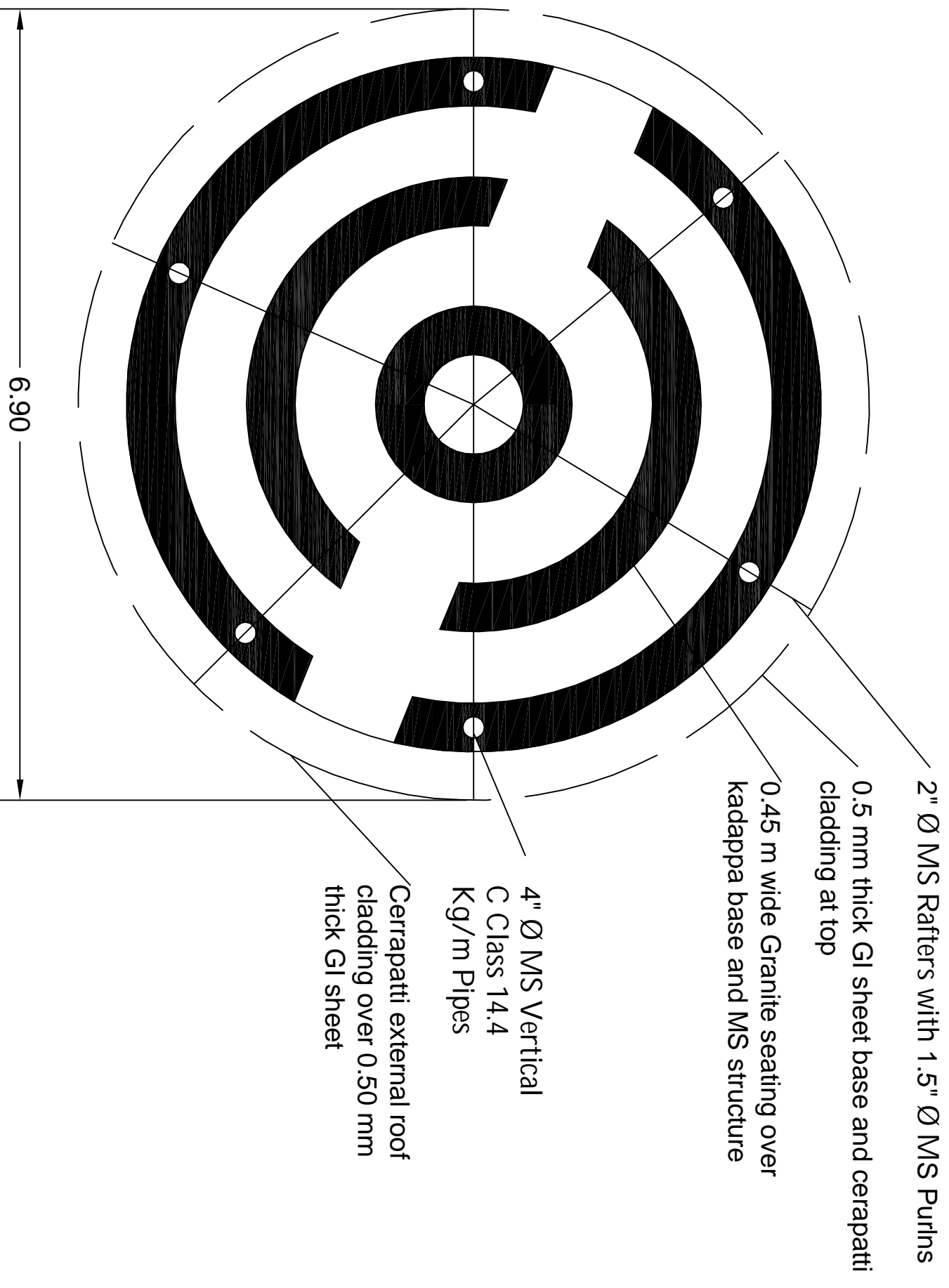


# Proposed MS Fabricated Structure



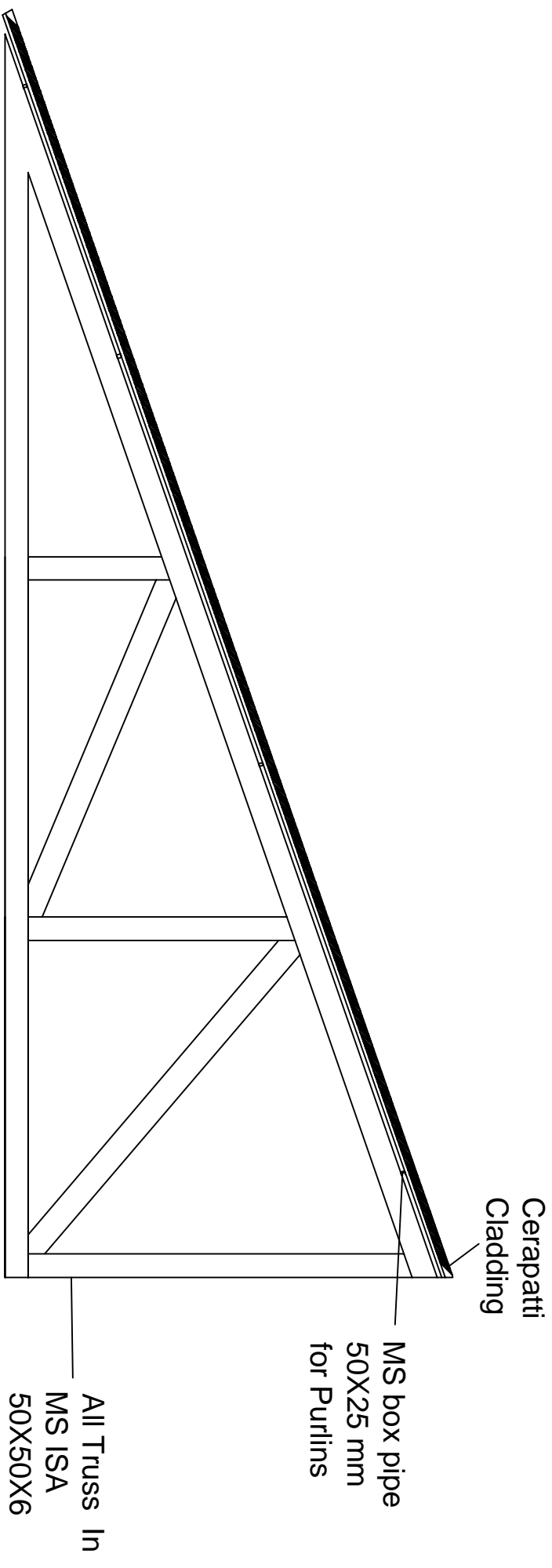
# Elevation

# Proposed Gaziboo

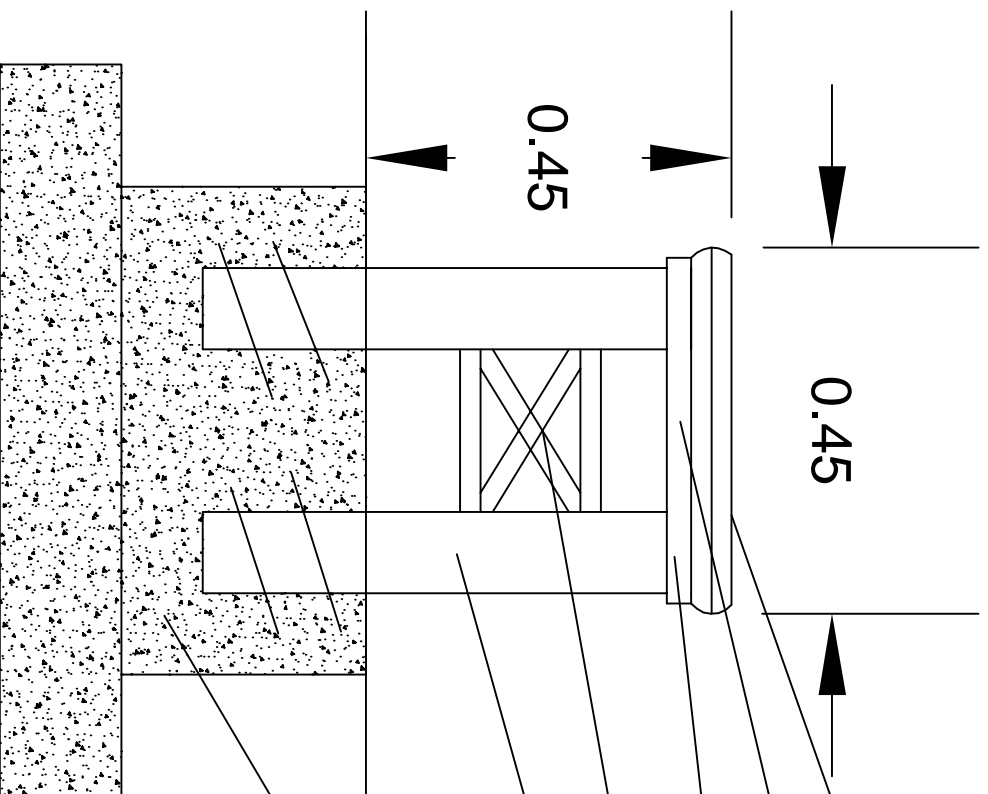


# Proposed Gaziboo Plan





# Truss Details for Gazibbo



25 mm thick Granite top edge round

25 mm thick Kadappa base

35 X 35 X 6 MS Angle base frame

1" Ø MS Box pipe

3" Ø MS Pipes

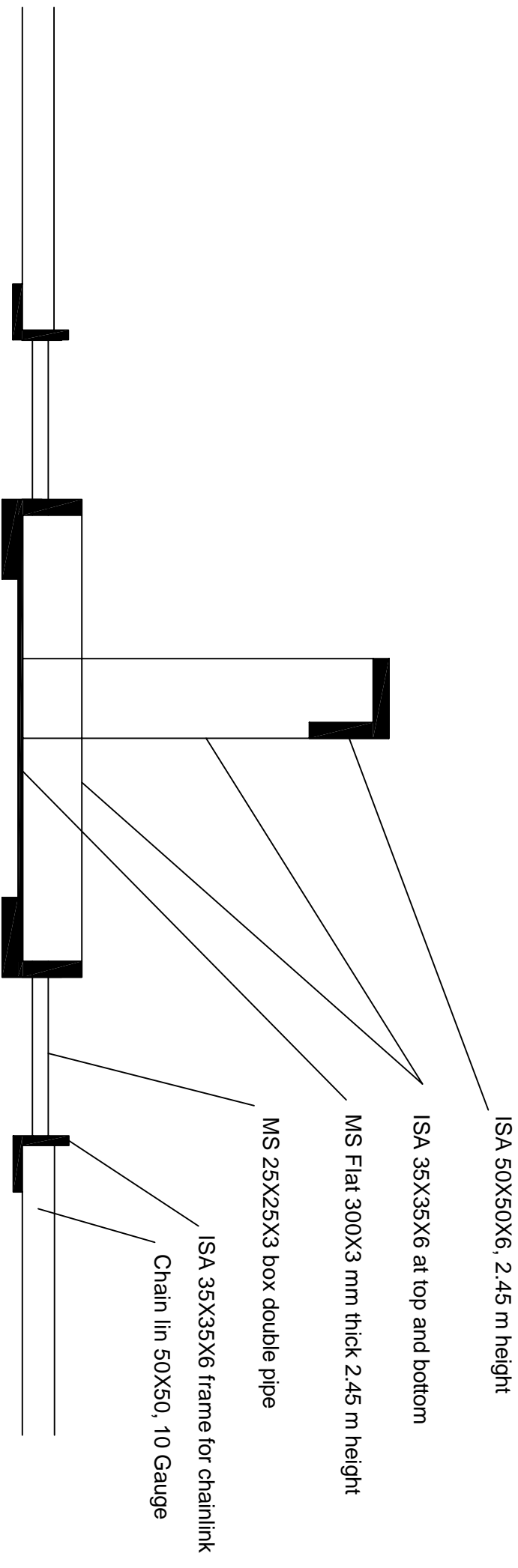
PCC Bed concrete 1:2:4

0.60 X 0.30 m deep

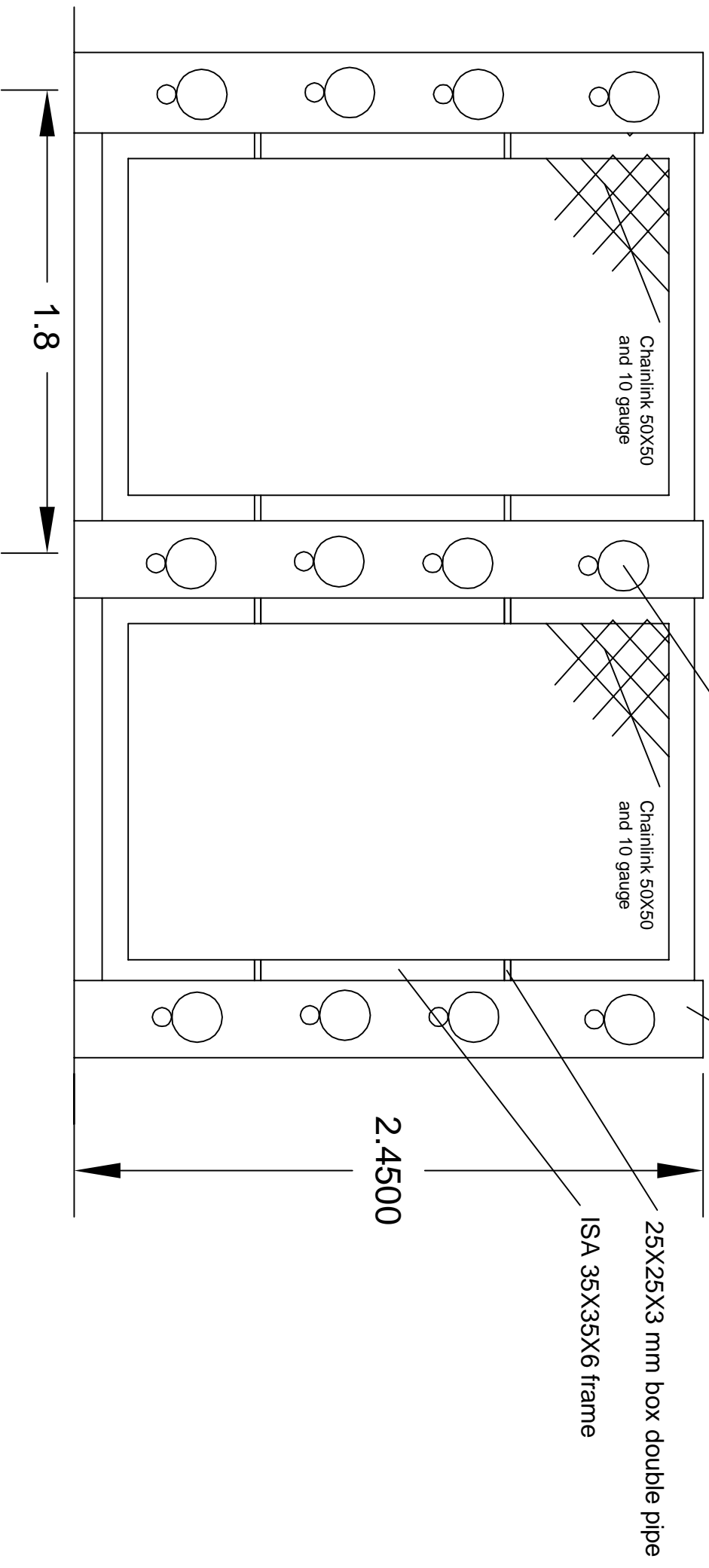
with holdfast

on PCC 0.15 m thick

# Granite seating



## Chainlink compound Pole details



Pictures will be fixed by college

MS Flat 0.30 m thick and 2.45 m height

25X25X3 mm box double pipe

ISA 35X35X6 frame

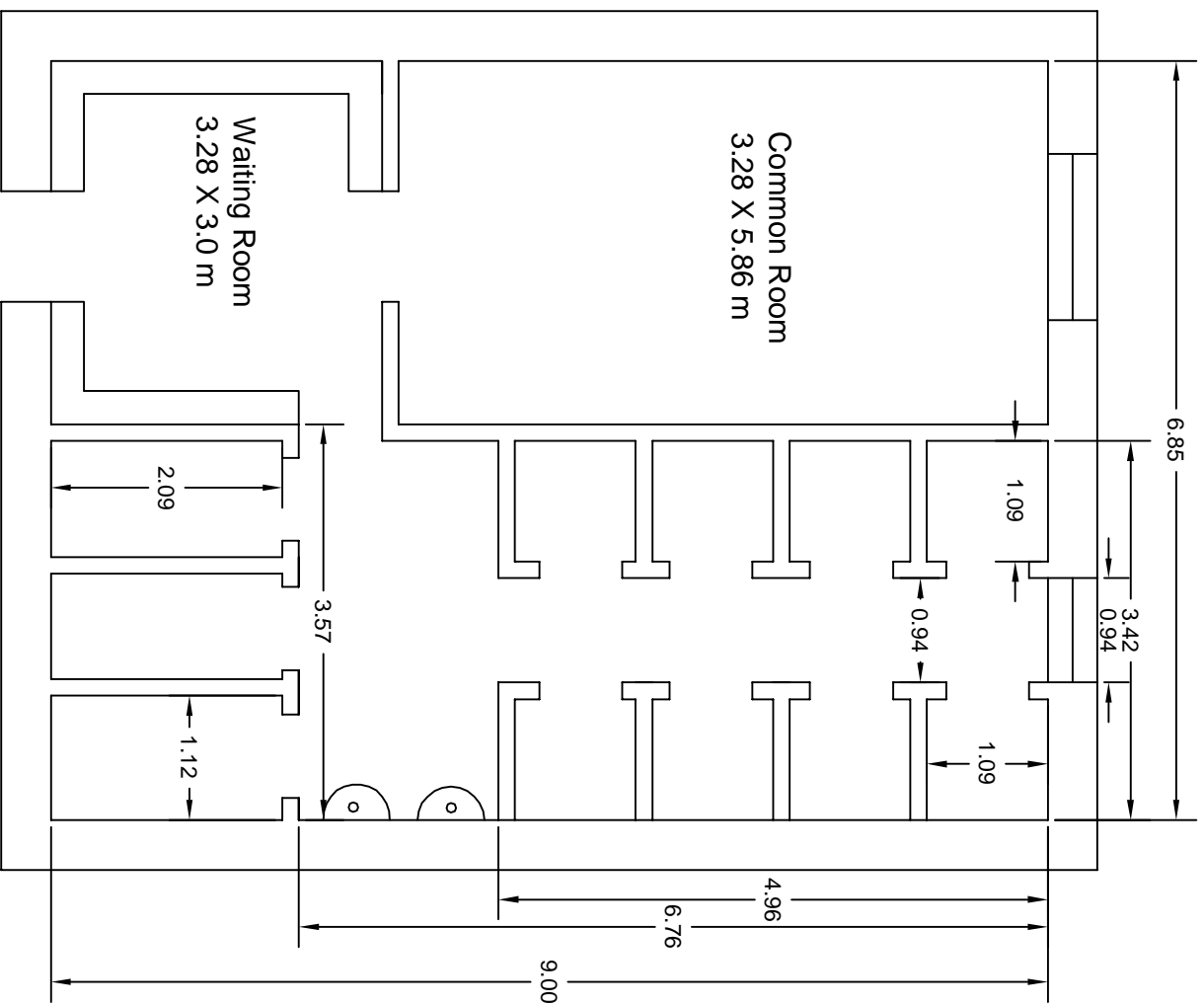
Chainlink 50X50  
and 10 gauge

Chainlink 50X50  
and 10 gauge

2.4500

1.8

# Chainlink compound Elevation



# Proposed Renovation of Ladies Toilet at Main Building



# Chemistry Lab

12.00

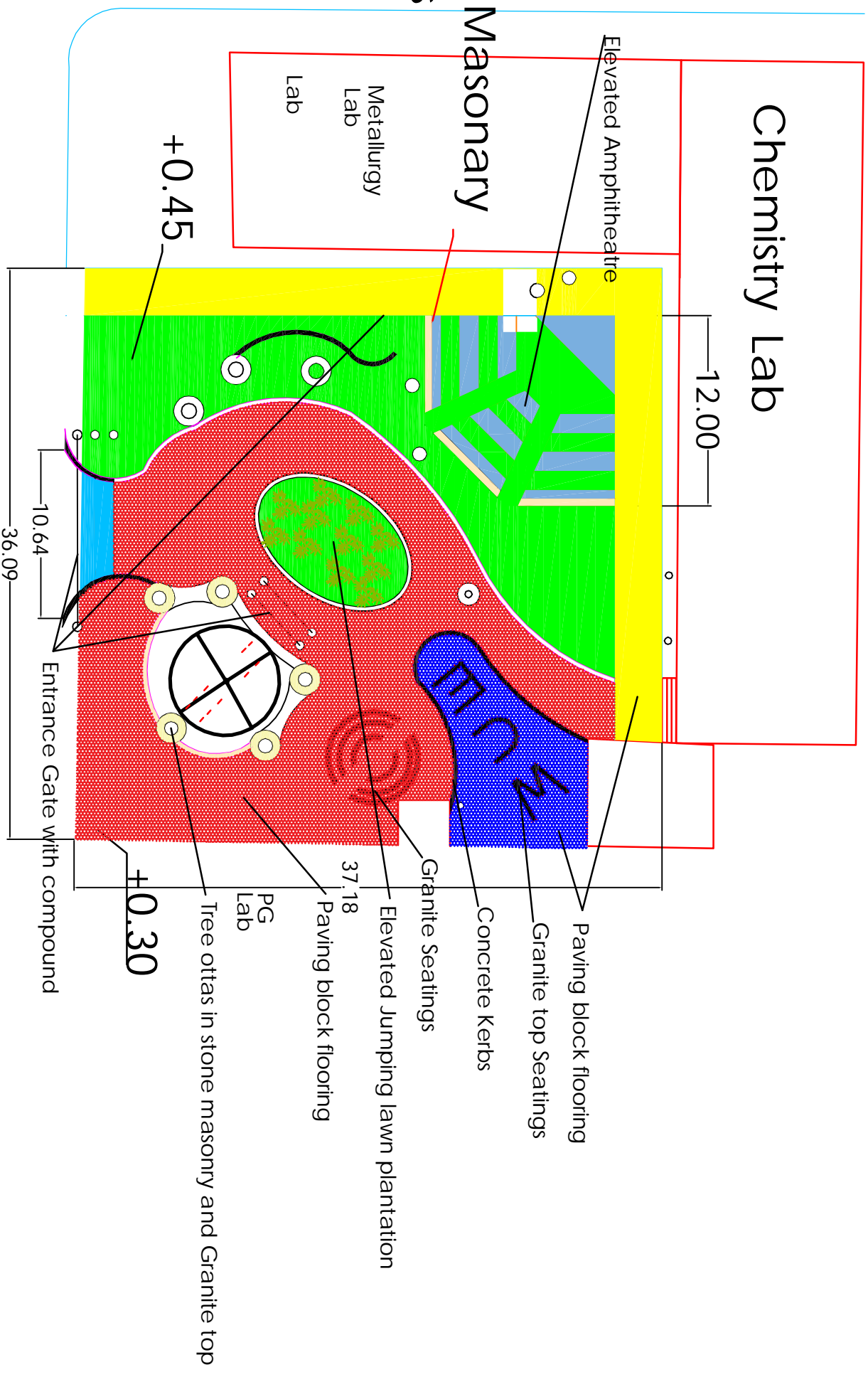
Elevated Amphitheatre

## UCR Masonary Steps

Metallurgy Lab

Lab

+0.45



Paving block flooring

Granite top Seatings

Concrete Kerbs

Granite Seatings

Elevated Jumping lawn plantation

Paving block flooring

PG Lab

Tree ottas in stone masonry and Granite top

+0.30

Entrance Gate with compound

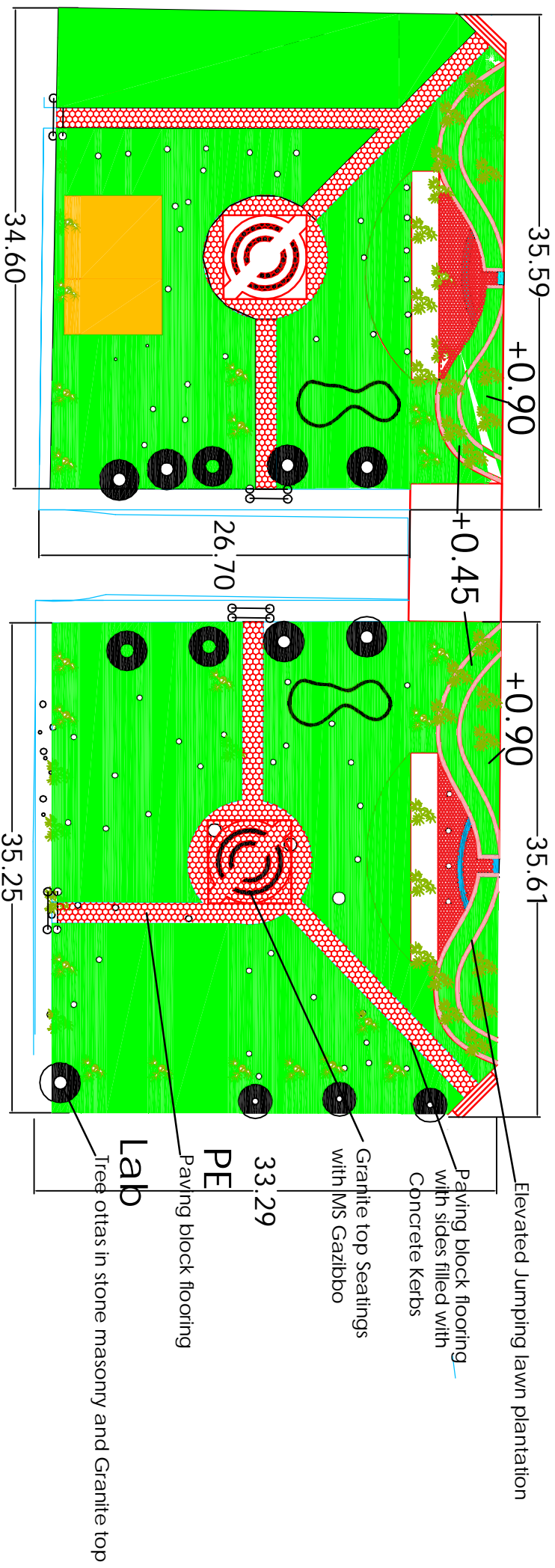
10.64

36.09

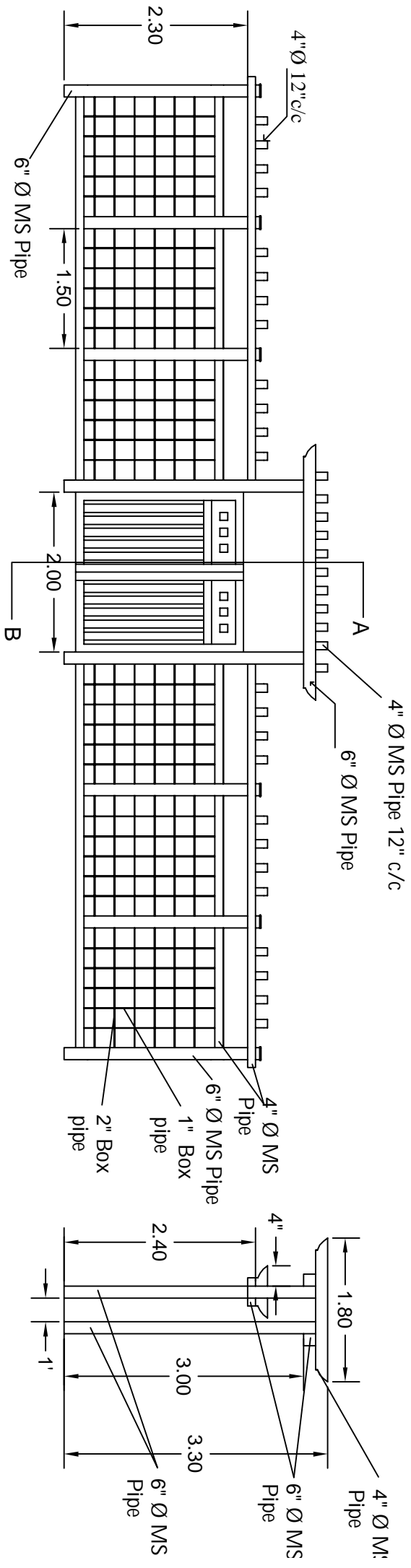
37.18

## Proposed Landscaping in front of Chemistry

# Main Building



Proposed landscaping in front of Computer and Electronics

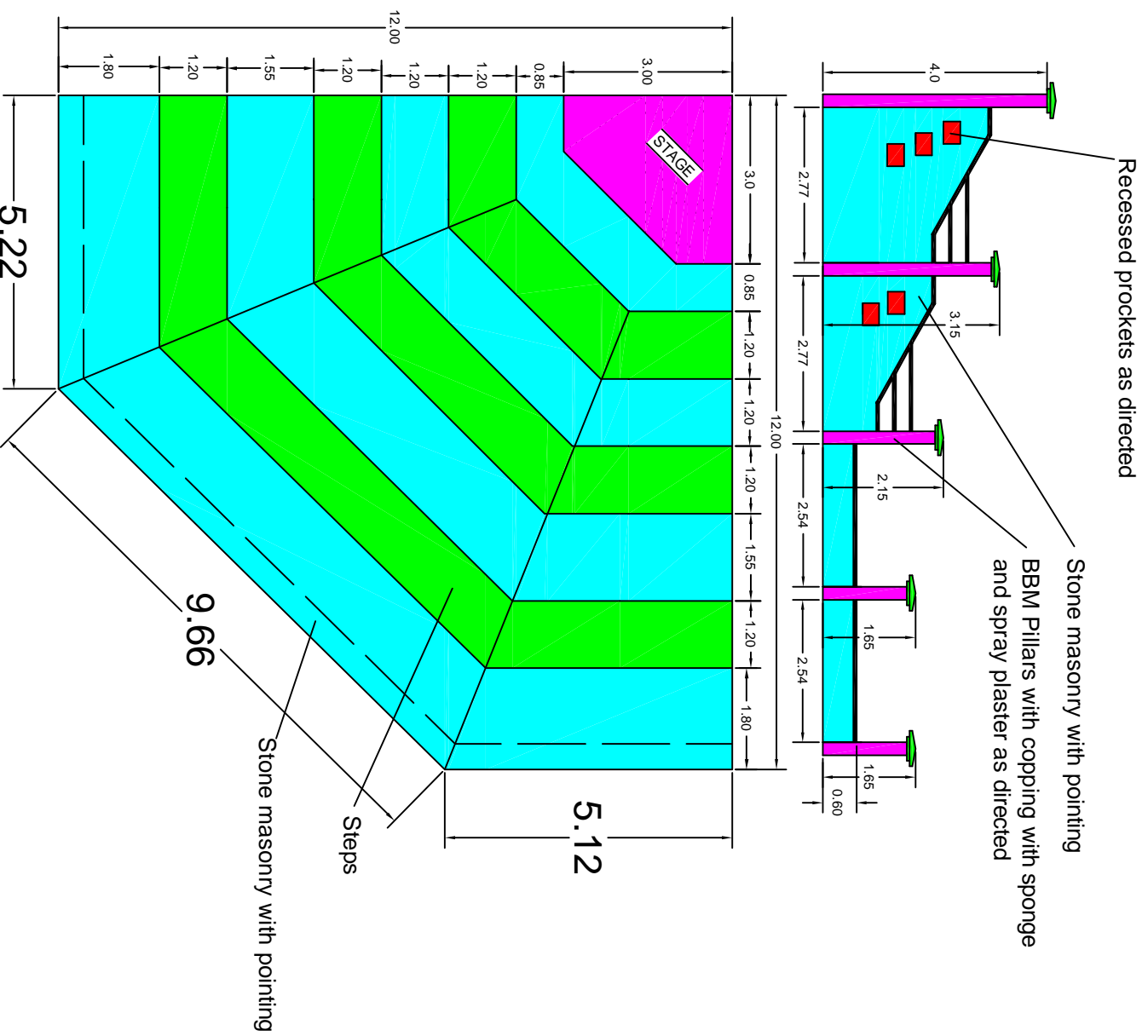


Front Elevation

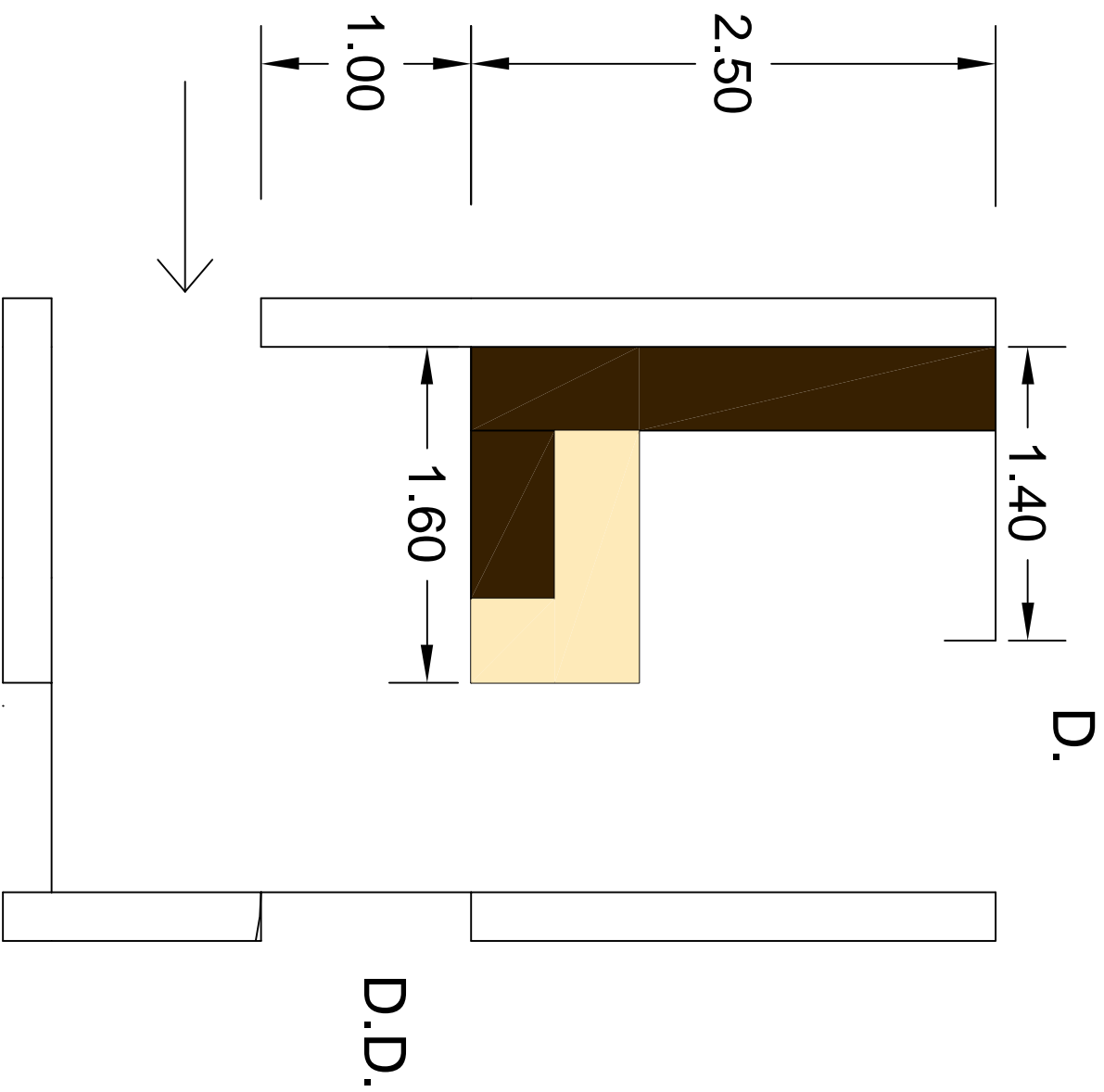
Section AB

# Proposed MS Fabricated Structure





# Details of Open air Amphitheatre



Details of furniture at Waiting room